

Asset Number: AC1443

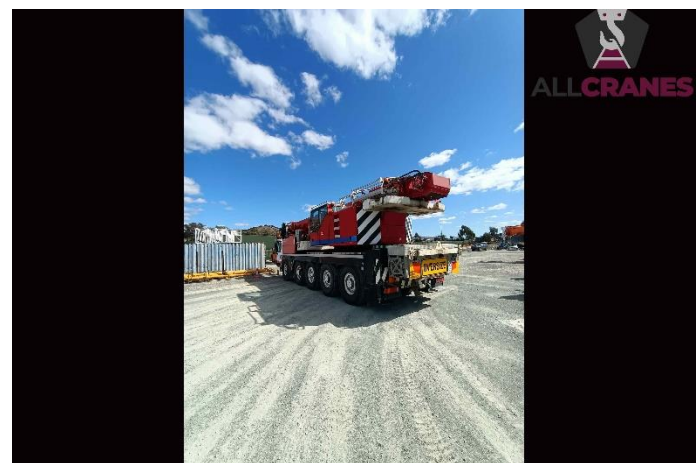
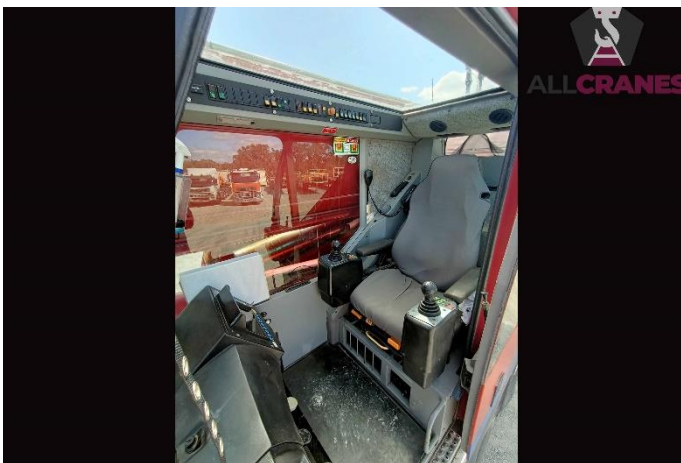
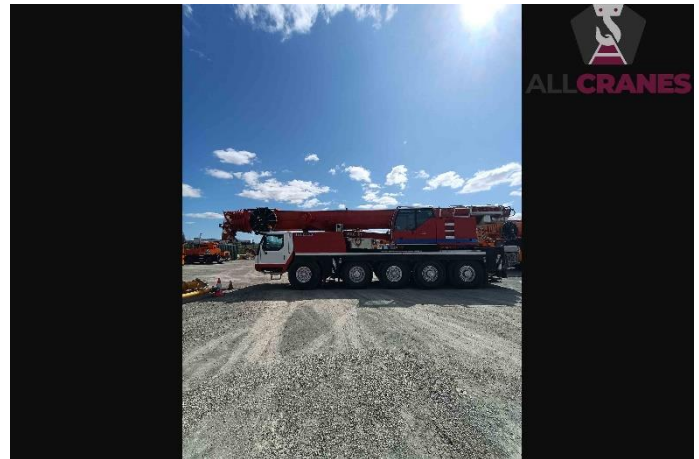
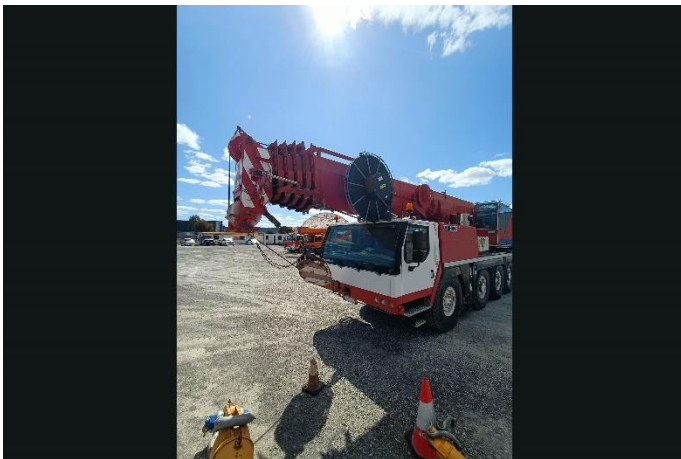
USED EQUIPMENT – ALL TERRAIN



ABN: 94 603 777 055

Updated 17/10/2024

Make	Liebherr	Model	LTM1095-5.1	Tonnes	95t
Year	2007	Kilometres	129,080	Hours	U – 14,658 L – 7,401
Boom	58m	Fly Jib	10.5-19m	Tyres %	445/95R25 50%
Crane Safe	Current	Road Registration	Current ACT	Condition	Good



Accessories: <ul style="list-style-type: none">• Hooks: 3 (16t Single Sheave Hook, 63t Rams Head 3 Sheave Hook, Headache Ball)• 7m Boom Insert• Rear Aluminium Toolbox• Dual Winches• 23t Total Counterweight• Telma Brake Fitted	Comments: <ul style="list-style-type: none">• Major Inspection valid to 2028• Sump gasket replaced• Clutch replaced, including flywheel• Pressure plate friction disc and rear main seal• A/C re-gassed and new compressor• Steering sensor front axle replaced• Suspension accumulators re-gassed and all lower track rods and wheel alignment• Engine intake gaskets, injectors replaced• Luff cylinder re-sealed• Winch counterweight replaced - winch 1
---	---

DISCLAIMER. We have in preparing this document used our best endeavours to ensure the information contained is true and accurate but accept no responsibility and disclaim all liability in respect to any errors, omissions, inaccuracies or misstatements contained. Prospective purchasers should make their own enquiries to verify the information contained in this document. Machine may remain in service until sold and may accrue additional hours and kilometres.

07 3180 2870

info@allcranesales.com.au

www.allcranesales.com.au