

Asset Number: AC1442

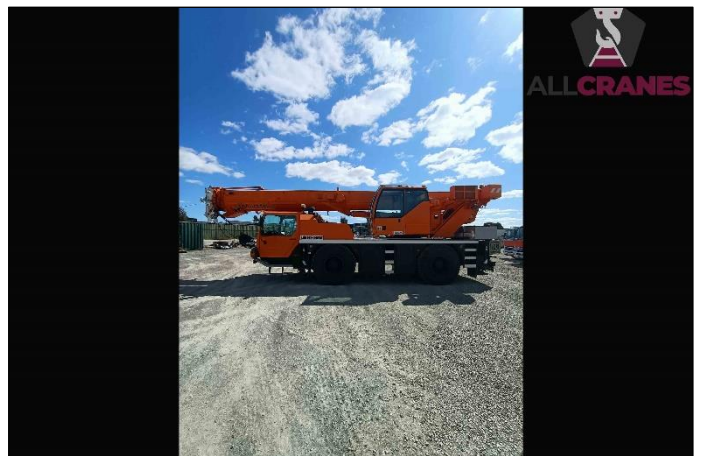
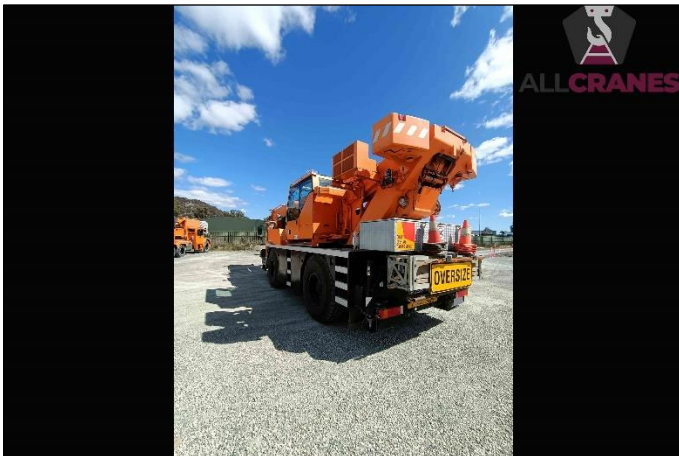
USED EQUIPMENT – ALL TERRAIN



ABN: 94 603 777 055

Updated 16/10/2024

Make	Liebherr	Model	LTM1040-2.1	Tonnes	40t
Year	2009	Kilometres	146,041	Hours	U – 6,214 L – 10,176
Boom	35m	Luffing Fly Jib	9.5m	Tyres %	525/80R25 100%
Crane Safe	Current	Road Registration	Current ACT	Condition	Good



Accessories: <ul style="list-style-type: none">• Wrecking Ball Hook• SWL 10T Single Sheeve Hook• SWL 25T 3 Sheeve Hook• Manual Luffing Fly 0°, 20°, 40°, 60°• 6.5t Total Counterweight• Rear Aluminium Toolbox	Comments: <ul style="list-style-type: none">• Major Inspection Valid till 2029• New A/C Pump and TX Valve• Radiator Repaired• LHS Joy-stick, TE computer below joystick and carrier main display has all been recently replaced• 4 x New Tyres and Wheel Alignment Carried out.• New batteries• New glass in upper front and RHS window.• Telma Brake Fitted
--	--

DISCLAIMER. We have in preparing this document used our best endeavours to ensure the information contained is true and accurate but accept no responsibility and disclaim all liability in respect to any errors, omissions, inaccuracies or misstatements contained. Prospective purchasers should make their own enquiries to verify the information contained in this document. Machine may remain in service until sold and may accrue additional hours and kilometres.

07 3180 2870
info@allcranesales.com.au

www.allcranesales.com.au