

**Asset Number:** AC1210

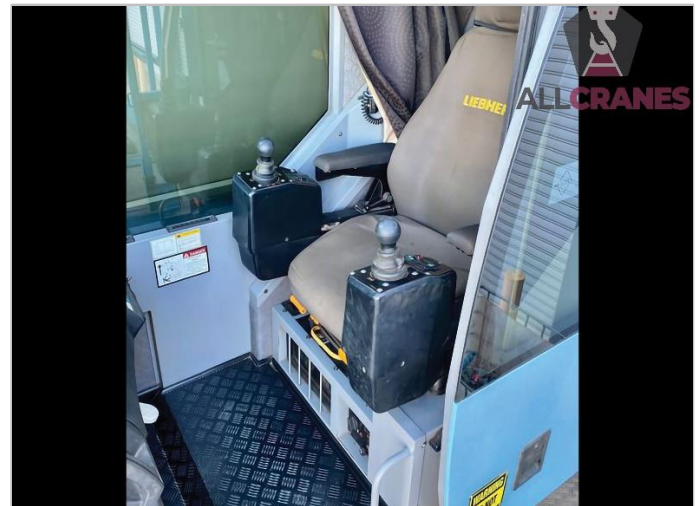
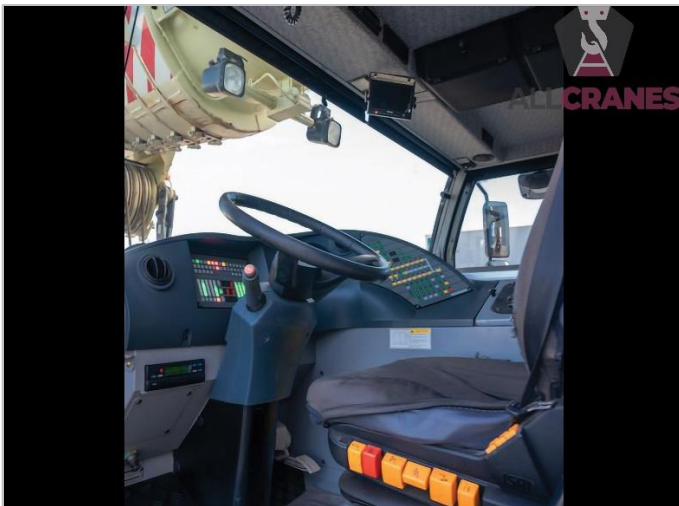
## USED EQUIPMENT – ALL TERRAIN



**ABN: 94 603 777 055**

Updated 9/01/2025

<b>Make</b>	Liebherr	<b>Model</b>	LTM1220-5.2	<b>Tonnes</b>	220T
<b>Year</b>	2012	<b>Kilometres</b>	145,973	<b>Hours</b>	U – 4,019 L – 3,862
<b>Boom</b>	60m	<b>Fly Jib</b>	22m + 7m insert	<b>Tyres</b>	20.5
<b>Crane Safe</b>	Current	<b>Road Registration</b>	Current WA	<b>Condition</b>	Good



### Accessories:

- Dual Winches
- 22m Double swing around mechanical fly + 7m insert
- Hooks: 3 (3 sheave, 5 sheave & headache ball)
- 74t Counterweight
- 6 Axle skel trailer to suit 54t counterweight (additional cost & negotiable)
- Spare Tyre
- Dolly

### Comments:

- 10 year inspection valid to 2033 (Just completed by Baden NSW)

DISCLAIMER. We have in preparing this document used our best endeavours to ensure the information contained is true and accurate but accept no responsibility and disclaim all liability in respect to any errors, omissions, inaccuracies or misstatements contained. Prospective purchasers should make their own enquiries to verify the information contained in this document. Machine may remain in service until sold and may accrue additional hours and kilometres.

07 3180 2870

[info@allcranesales.com.au](mailto:info@allcranesales.com.au)

[www.allcranesales.com.au](http://www.allcranesales.com.au)