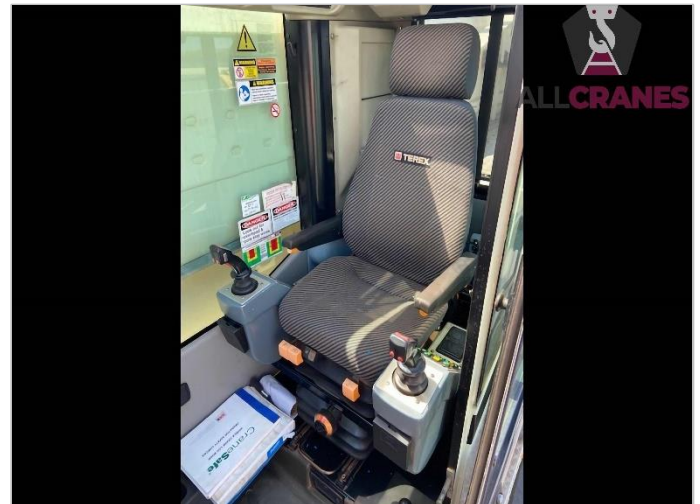


Updated 26/10/2023

|                   |         |                          |             |                  |                        |
|-------------------|---------|--------------------------|-------------|------------------|------------------------|
| <b>Make</b>       | Demag   | <b>Model</b>             | AC140       | <b>Tonnes</b>    | 140t                   |
| <b>Year</b>       | 2012    | <b>Kilometres</b>        | 14,422      | <b>Hours</b>     | U – 8,251<br>L – 1,666 |
| <b>Boom</b>       | 60m     | <b>Fly Jib</b>           | 9.1-17m     | <b>Tyres %</b>   | 445/95R25              |
| <b>Crane Safe</b> | Current | <b>Road Registration</b> | Current QLD | <b>Condition</b> | Good                   |



**Accessories:**

- Dual Winches
- Fly and Needle
- 39t Counterweight
- Hooks: 4 (80t 5 sheave, 48t 3 sheave, 16t 1 sheave & 8t headache ball)
- Rooster Sheave

**Comments:**

- 10 year due
- First into service 2013
- Luff ram re-chromed and re-sealed 2022
- Tele cylinder resealed 2022
- Main Winch seal kit and winch brake repaired

DISCLAIMER. We have in preparing this document used our best endeavours to ensure the information contained is true and accurate but accept no responsibility and disclaim all liability in respect to any errors, omissions, inaccuracies or misstatements contained. Prospective purchasers should make their own enquiries to verify the information contained in this document. Machine may remain in service until sold and may accrue additional hours and kilometres.